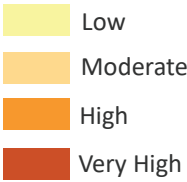




Landslide Susceptibility Map of Washington County, Oregon

Landslide Susceptibility

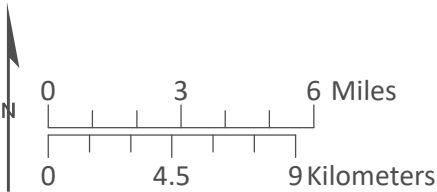
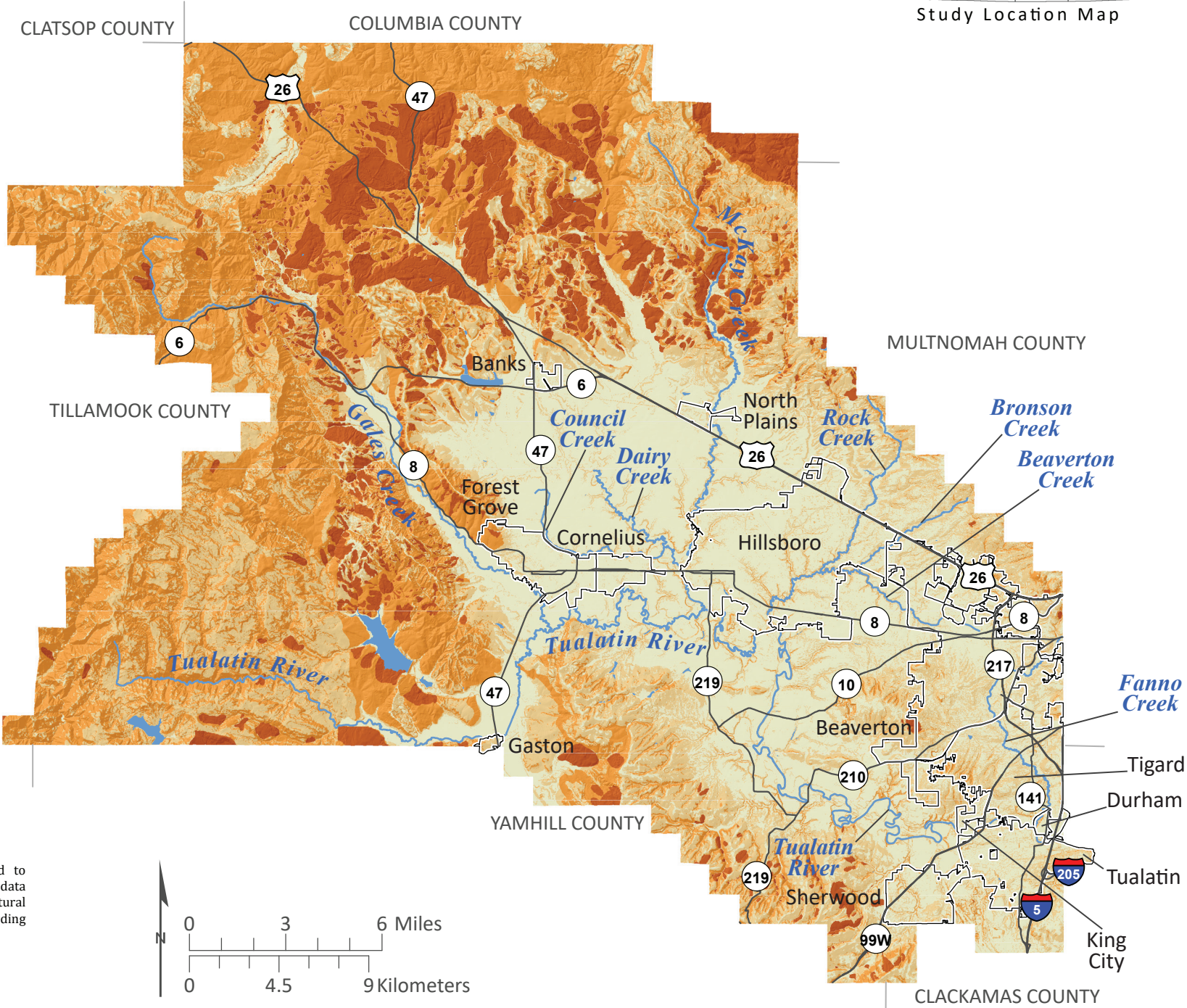
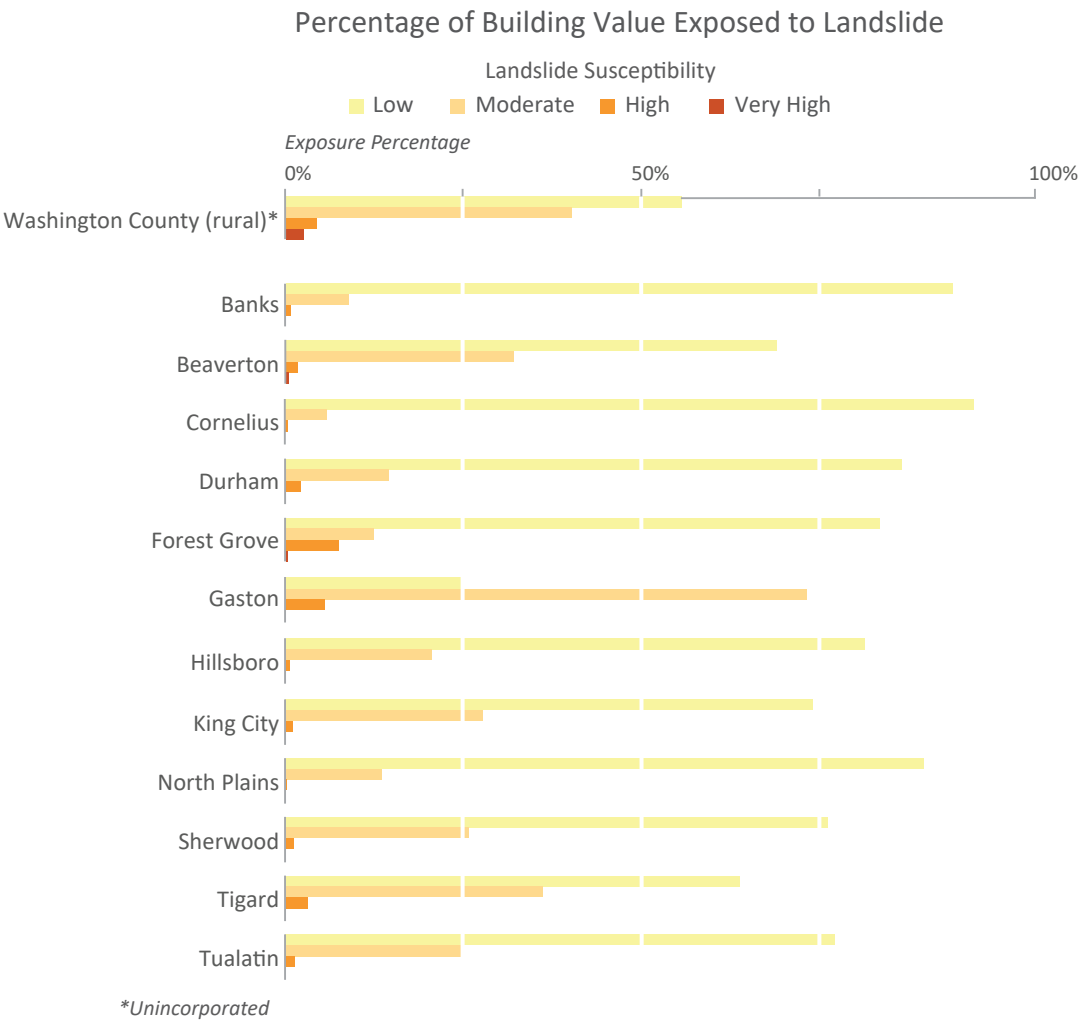


Landslide susceptibility is categorized as Low, Moderate, High, and Very High which describes the general level of susceptibility to landslide hazard. The dataset is an aggregation of three primary sources: landslide inventory (SLIDO), generalized geology, and slope.

Disclaimer: This product is for informational purposes and may not have been prepared for or be suitable for legal, engineering, or surveying purposes. Users of this information should review or consult the primary data and information sources to ascertain the usability of the information. This publication cannot substitute for site-specific investigations by qualified practitioners. Site-specific data may give results that differ from the results shown in the publication. See the accompanying text report for more details on the limitations of the methods and data used to prepare this publication.



Study Location Map



Data Sources:
Landslide susceptibility: Oregon Department of Geology and Mineral Industries, Burns and others (2016) & Hairston-Porter and others (2021)
Roads: Oregon Department of Transportation Signed Routes (2013)
Place names: U.S. Geological Survey Geographic Names Information System (2015)
City limits: Oregon Department of Transportation (2014)
Basemap: Oregon Lidar Consortium (2014)
Hydrography: U.S. Geological Survey National Hydrography Dataset (2017)
Projection: NAD 1983 UTM Zone 10N
Software: Esri® ArcMap 10, Adobe® Illustrator CC
Cartography by: Matt C. Williams, 2022

This map is an overview map and not intended to provide details at the community scale. The GIS data that are published with the Washington County Natural Hazard Risk Assessment can be used to inform regarding queries at the community scale.